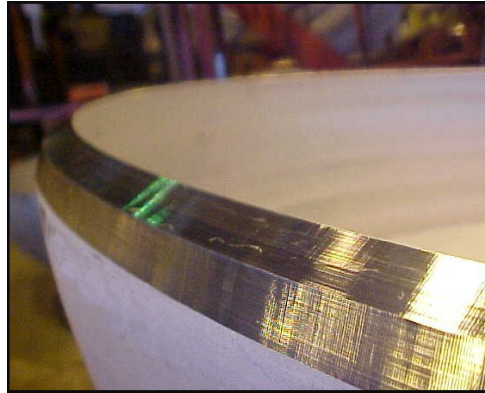
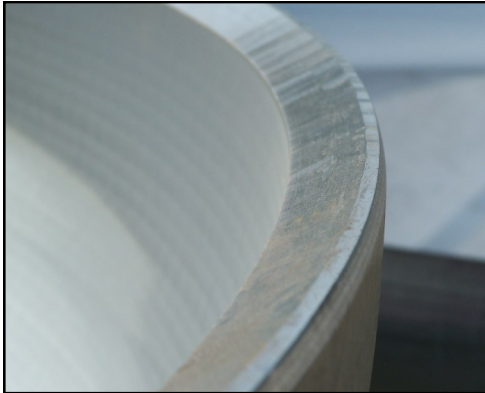


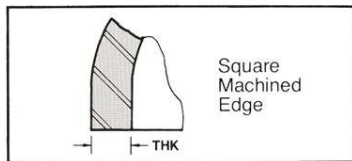


Brighton's "Tru-Edge"

Brighton Tru-Edge Heads gets its name from the precision bevels that are machined on the head. This accurate edge preparation is an important key to speeding tank assembly and welding. Because the edges are true, savings in time and money are possible through faster fit up and welding. Several edge styles are available as shown below.



A-STANDARD EDGE



Key:

- THK:** Head Thickness
- TS:** Shell Thickness
- L:** Land Zone
- IB:** Inside Bevel
- OB:** Outside Bevel

